

52. Mijn Blijzerke

Allegretto

Handwritten musical notation for the first staff, including a treble clef, a key signature of one flat (Bb), and a 6/8 time signature. The notation begins with a double bar line and a repeat sign, followed by several measures of music.

Mijn blij-zer-ke, mijn krieb-ke daer
 Rijk-je vuis-je bul-len doo
 Nieg-ke mag er sae-ven geen

Handwritten musical notation for the piano accompaniment, consisting of two staves: the upper staff has a treble clef and the lower staff has a bass clef. Both are in Bb and 6/8 time.

Handwritten musical notation for the second vocal staff, continuing the melody from the first staff.

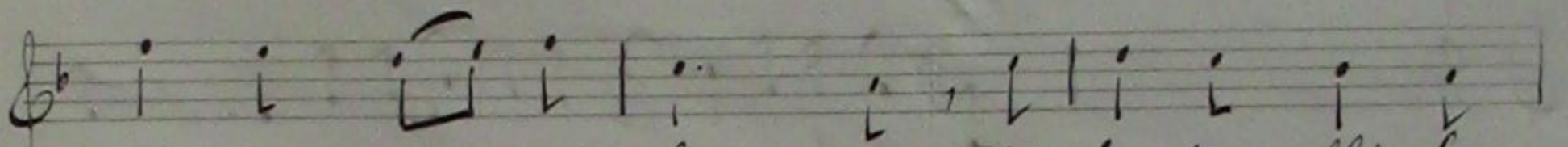
ligt ge ton-ge-^{schijns}feld ge-oud ge-lyt een
 krod-dig el-le bei ryl, oke, de He-ker
 Hoem-ker o- per-gra vil moe-der-ken nog

Handwritten musical notation for the piano accompaniment, continuing the harmonic support for the second vocal staff.

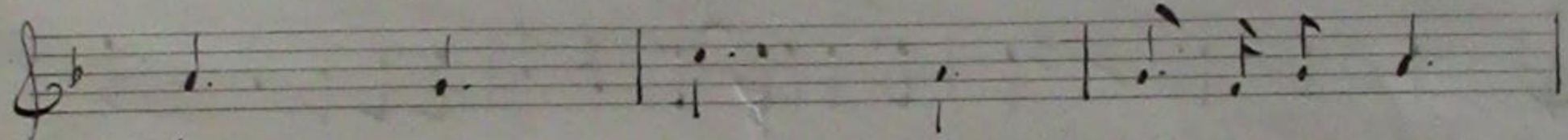
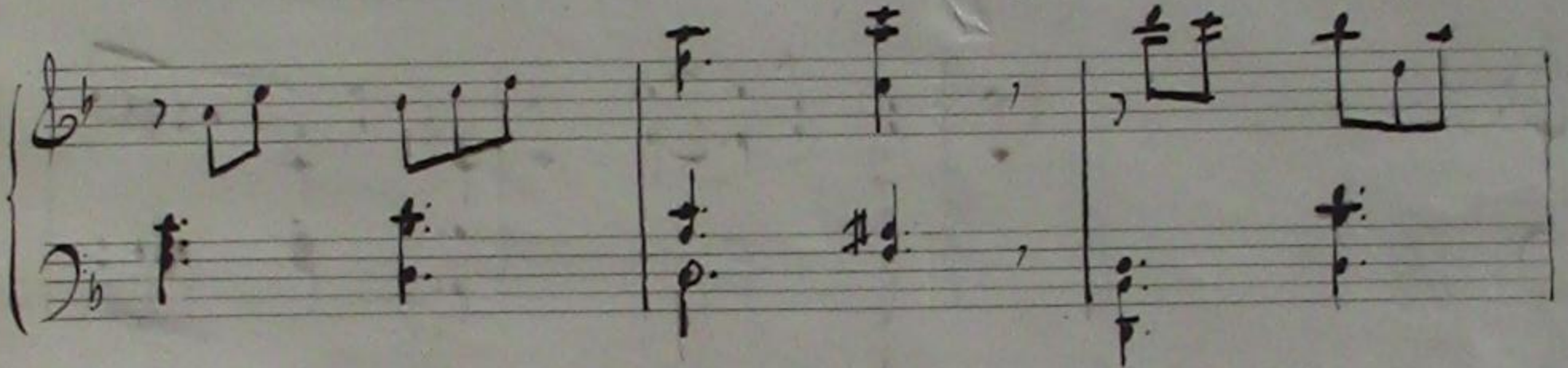
Handwritten musical notation for the third vocal staff, concluding the piece.

bliel-He 2 diels-ge-Hele. Weet,
 rad-len van mijn-nen brei man
 toe-ken 2 moec sul-le thaan-ter

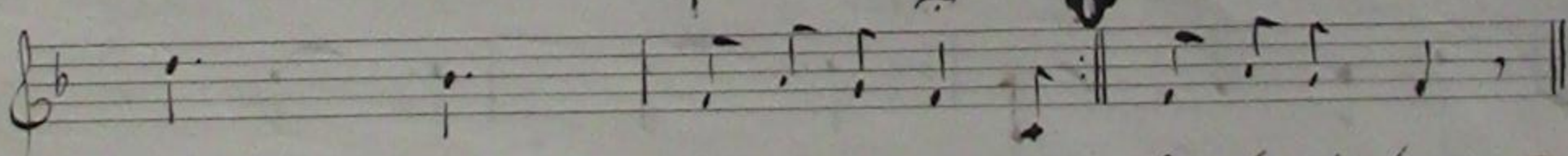
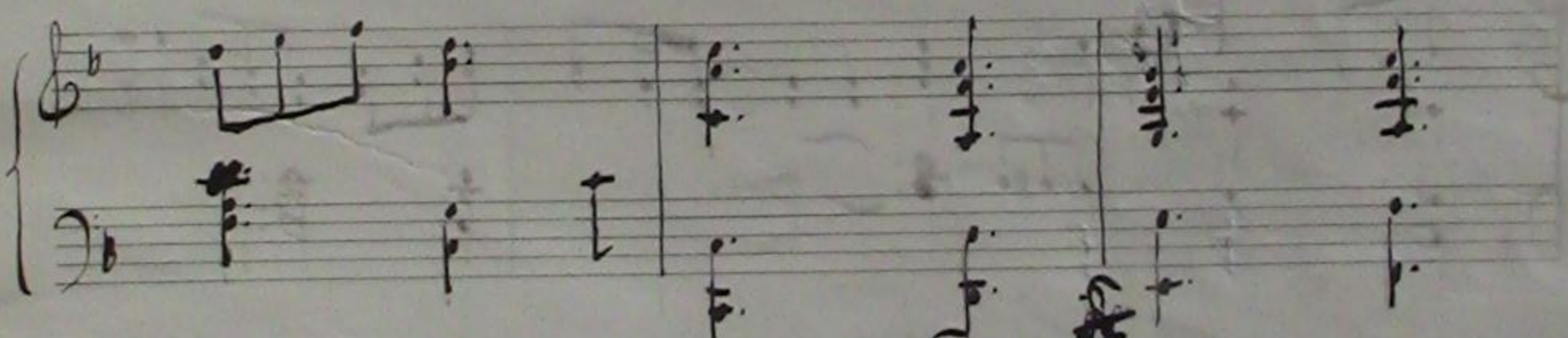
Handwritten musical notation for the final piano accompaniment, including a double bar line and a repeat sign at the end.



kind-je die gaud sla- pen lij lu- ten flin-ke
kind-je moet een sla- pen een die op kan
kin-der- hens die sla- pen lij den gel- hem ge-



ma - pen -
re - pen -
sche - pen -
Don don, don de ri don.



Don don don de ri don 2 kijl
3 Jan
f

