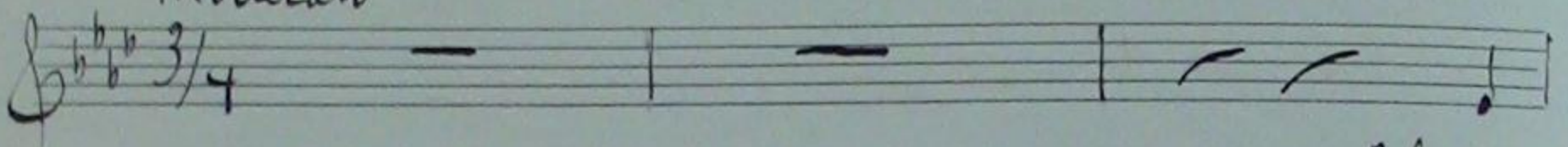
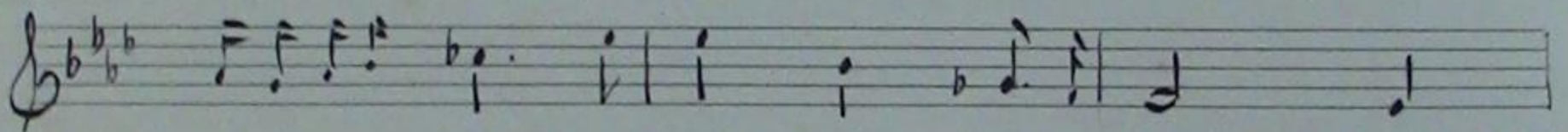
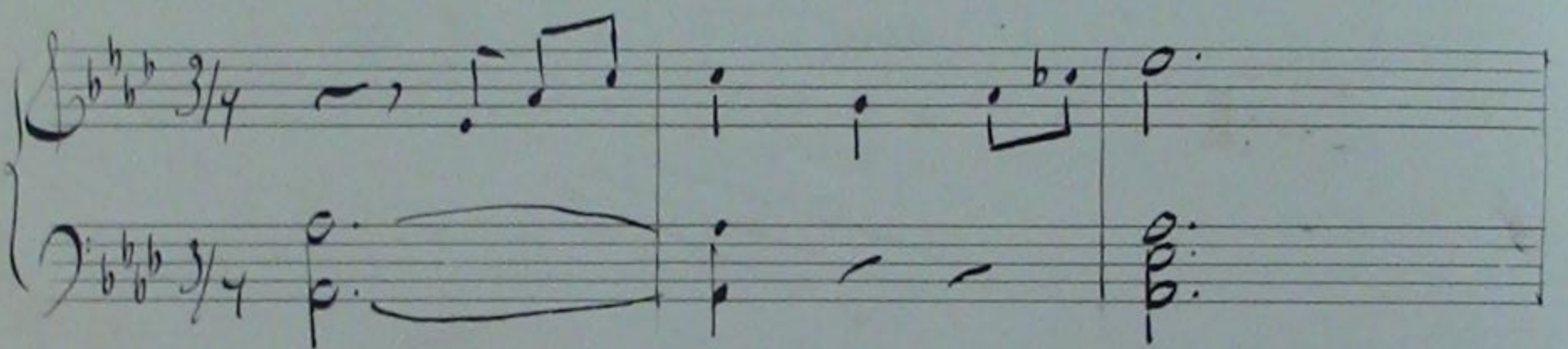


Blauw welf sich uwe diel

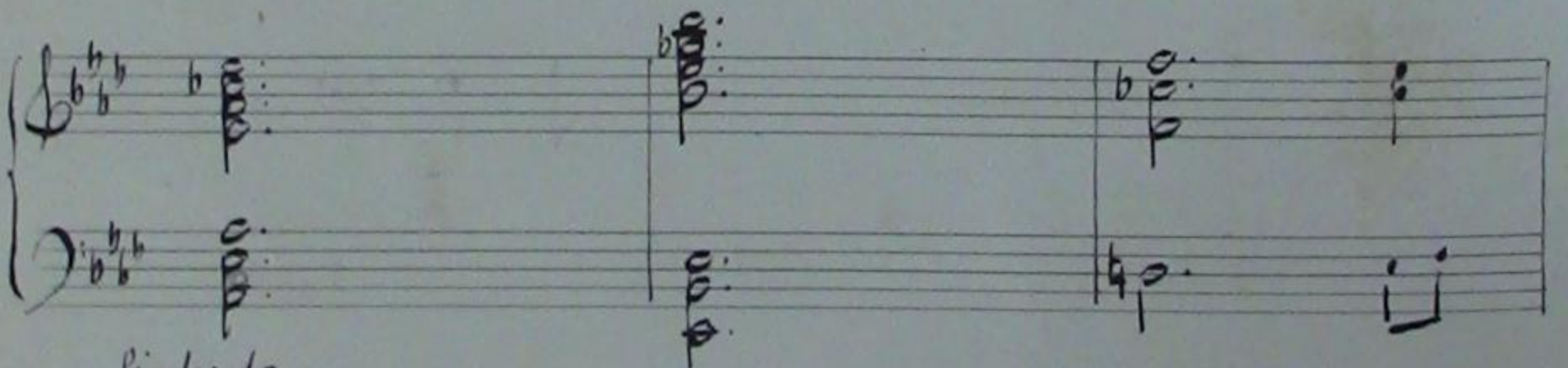
Moderato



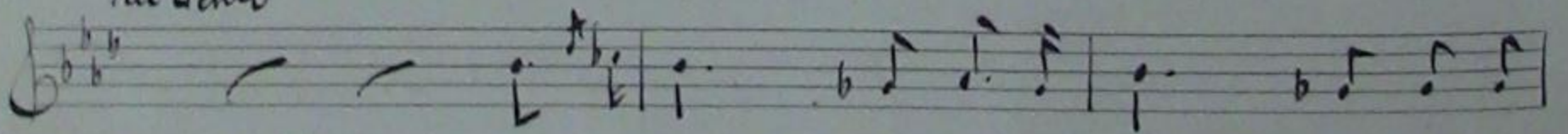
Blauw



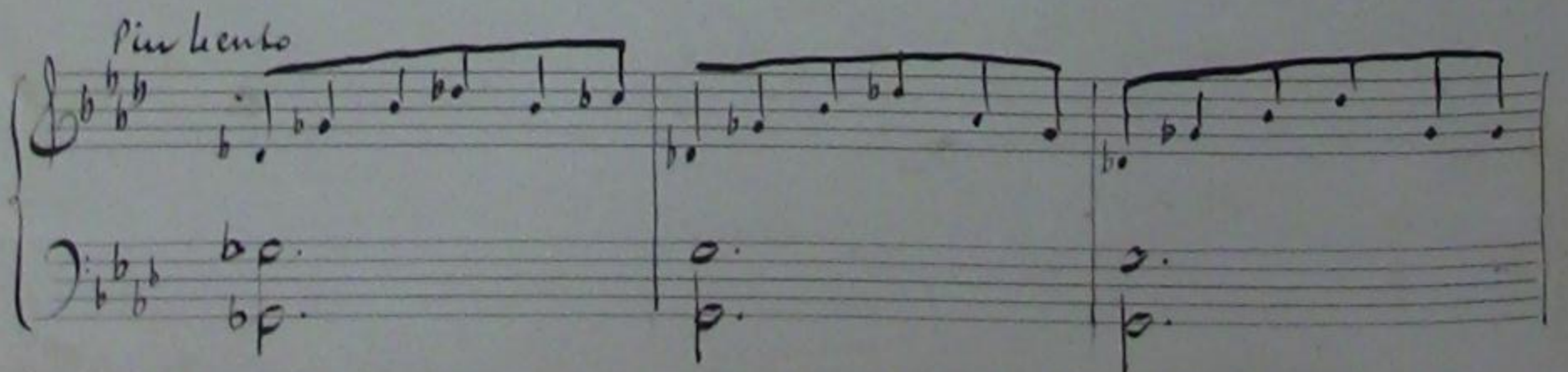
Welf sich u. we diel vol ster. ren om de mij - ne



Piu lento



Uw - oo. gen zijn zoo groot der gensl de



a tempo

Handwritten musical notation for the first system, featuring a vocal line on a single staff. The melody begins with a half note, followed by quarter notes and eighth notes. The lyrics are written below the staff.

nacht er schij- ne. Dat is de

a tempo

Handwritten piano accompaniment for the first system, consisting of two staves. The right hand plays chords and moving lines, while the left hand plays a simple bass line. The tempo marking *a tempo* is written above the right staff.

rit.

Handwritten musical notation for the second system, featuring a vocal line on a single staff. The melody continues with quarter and eighth notes. The lyrics are written below the staff.

he- mel, Waar ik lig - en

rit.

Handwritten piano accompaniment for the second system, consisting of two staves. The right hand features a series of chords and a melodic line, while the left hand provides harmonic support with chords and a bass line. The tempo marking *rit.* is written above the right staff.

a tempo

Handwritten musical notation for the third system, featuring a vocal line on a single staff. The melody includes a triplet of eighth notes. The lyrics are written below the staff.

kniel Dat is de he- mel, Waar om t'bluei- en van haar

a tempo

cresc.

Handwritten piano accompaniment for the third system, consisting of two staves. The right hand features a melodic line with a crescendo marking above it, while the left hand plays a simple bass line. The tempo marking *a tempo* is written above the right staff.

f *mp.*

pracht de God - heid lui - vert

f *mp.* *mp.*

hu die heeft mij - ne die ge - sui - verd

Schone is de nacht.

1 Sept. 1921
 René de Clercy