

40. Gelijk de Boom

Moderato

Handwritten musical notation for the first staff, showing a treble clef, a key signature of two flats (B-flat and E-flat), and a 2/4 time signature. The staff contains several measures of rests and a final measure with a quarter note and a fermata.

Ge-
Dak
geen

Handwritten musical notation for the piano accompaniment, consisting of two staves (treble and bass clefs) in 2/4 time. The right hand features chords and a melodic line, while the left hand plays a steady eighth-note accompaniment.

Handwritten musical notation for the vocal line, starting with a treble clef and a key signature of two flats. The melody consists of quarter and eighth notes.

die boom bij den strom die wor- kels ech. te
heest en zucht geen na jaars- lichts o boom der eet te
scha- dew schijn mag lief- de zijn of anders. is 't geen

Handwritten musical notation for the piano accompaniment, continuing from the previous section with two staves in 2/4 time.

Handwritten musical notation for the vocal line, continuing the melody from the previous section.

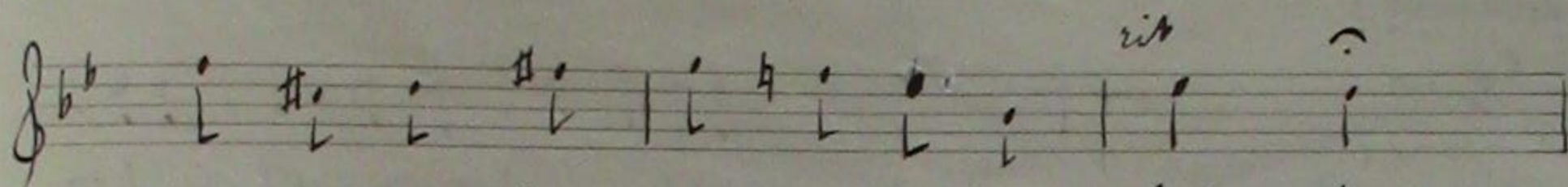
lief - de .
lief- de .
lief- de .

de zon- ne staat in
ver- duistert ist der
Maar ver- en trouw by-

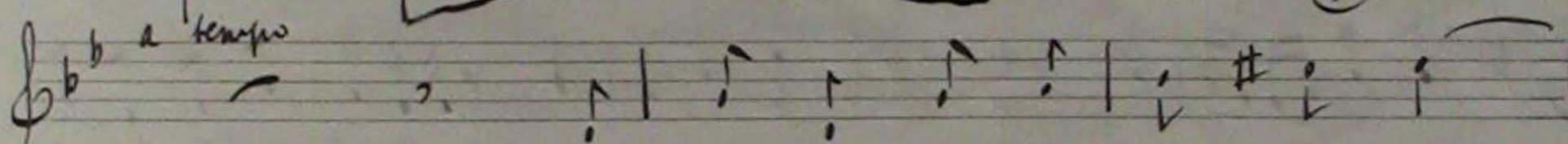
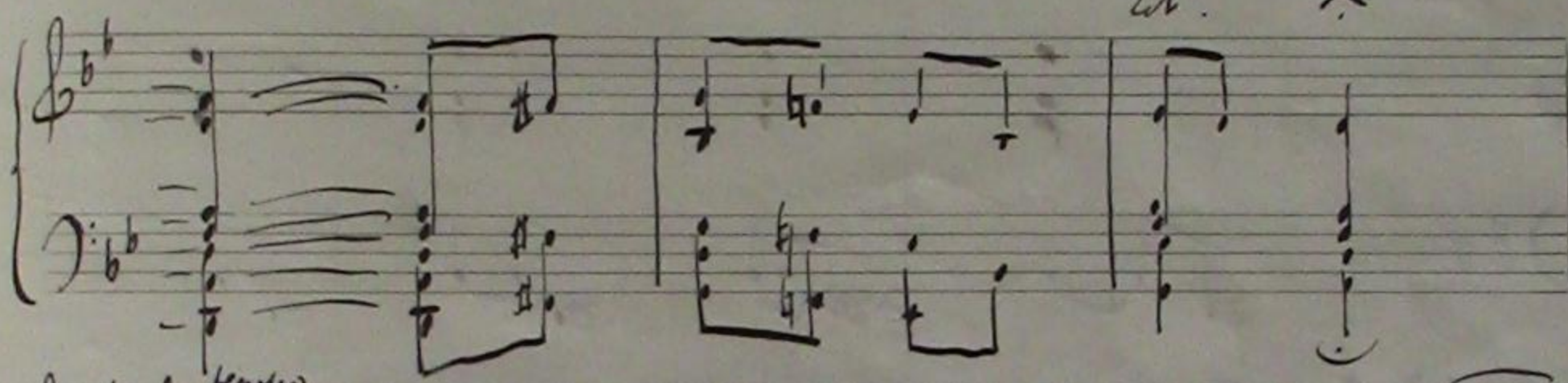
Handwritten musical notation for the piano accompaniment, concluding the piece with a double bar line and a 'rit' (ritardando) marking. The right hand has a few final notes, and the left hand has a final chord.

rit

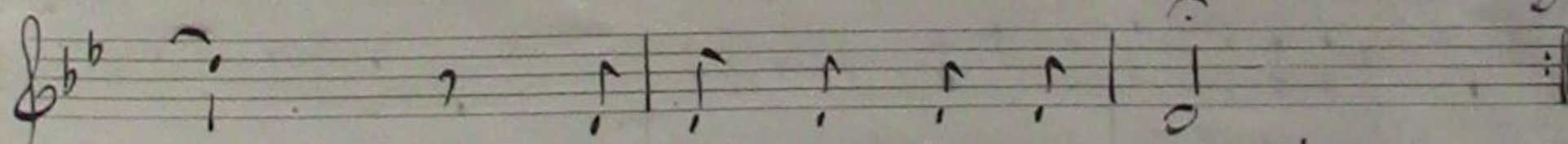
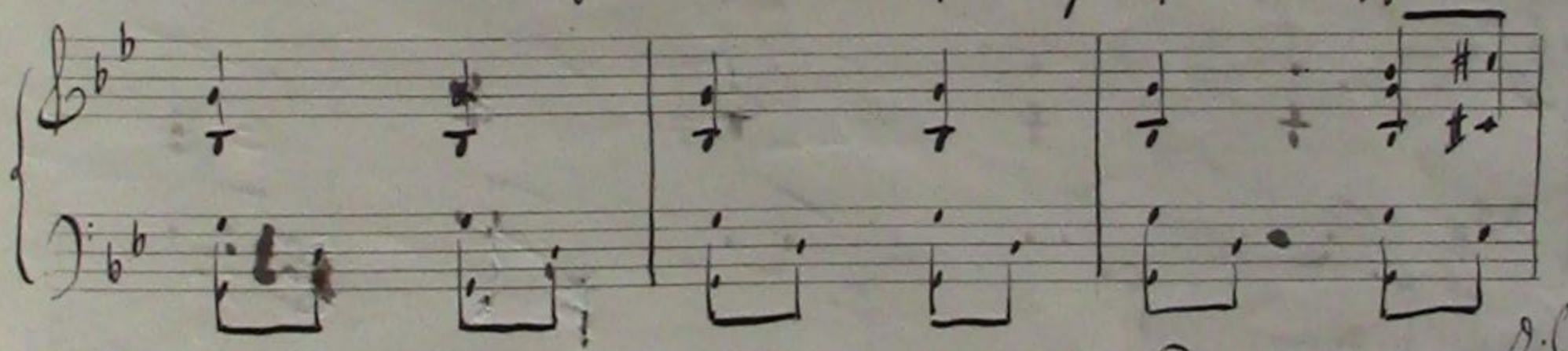
rit



Va-ter daalt Een spie- gel-beeld der lief- de.
 uit ge- winst dat speel- sche beeld der lief- de.
 man en vrouw O dat o dat is lief- de.



O beeld o boom, o le-vens-stroom,
 doch heurt er tucht geën na-jaars-lucht,
 geen scha-duw schijf mag lief- de zijn,



O liefde en lief- de- droom!
 de liden we lief- de vult
 Maar van lijf beuglen prijns.

